

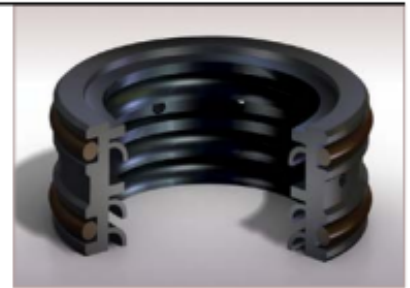
# 30KC Viscous Fluids and Powders

*Cartridge design for sealing powders and viscous fluids*

Chesterton® 30KC polymer cartridge seals are designed for use in dynamic rotary seal applications. This cartridge design uses high performance, filled PTFE materials proven to withstand the high shear rates, frictional heat, and abrasives common when pumping high viscosity products and powders.

The 30KC high performance, filled PTFE compounds are coupled with the unique seal design to provide excellent fluid compatibility and outstanding performance. All engineered cartridges are custom manufactured to equipment dimensions eliminating the need for equipment modifications.

The 30KC is designed with an inboard sealing element, an outboard sealing element, and built-in flushing ports. The inboard lip seals process fluid, the outboard lips seal barrier fluid, while the flush port allows for flushing. The versatile cartridge design is extremely tough and able to withstand adhesion between the sealing surfaces and shaft due to reacted material and dry running capabilities.

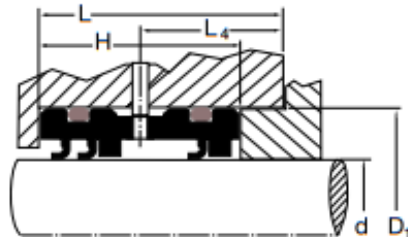


- *Outperform conventional packing, sealing high viscosity fluids and dry powders*
- *Decrease downtime, easy-to-install versatile cartridge design*
- *Improve performance of compression packing, distinct PTFE materials*
- *Custom designed cartridges made to equipment dimensions*

## SPECIFICATIONS

*Material (combination) (adapters/sealer rings)	Shaft Size mm (inch)	Temperature °C (°F)	Speed m/s (ft/min)	Pressure bar (psi)	Mating surface (Rockwell C)	Surface finish µm (µ inch)	**Recommended use
AWC100 (PTFE) Polyimide	25 to 200 (1.000 to 7.875)	-20 to 150 (-30 to 300)	Up to 5 (984)	to 10 (150)	45	Dynamic	<b>Excellent dry</b> Excellent low viscosity (<2,000 cp) Powders, oil, resins, glues, paints No water or steam
AWC300 (PTFE) Molybdenum & glass					55	0.2 to 0.4 (8 to 16)	<b>Excellent high viscosity</b> (>2,000 cp) Good in dry, water or steam
AWC400 (PTFE) Carbon & graphite					55	0.4 to 0.8 (16 to 32)	<b>Excellent in water or steam</b> Good dry and low viscosity Powders, asphalt, clay, slurries
AWC510 Mineral (FDA listed)					45		<b>Excellent dry</b> Good in water or steam Chocolate and syrups No petroleum liquids

\* fluoroelastomer O-rings provided (FDA listed w/ AWC510) \*\* runout to 0,15mm (.005")



## PRODUCT PROFILES:



30KC

### To place an order:

Product profile: \_\_\_\_\_  
 Material: \_\_\_\_\_  
 Rod shaft diameter (d): \_\_\_\_\_  
 Stuffing bore diameter (D<sub>1</sub>): \_\_\_\_\_  
 Groove height (L): \_\_\_\_\_  
 Distance to flush port(L<sub>4</sub>): \_\_\_\_\_  
 Cartridge height(H): \_\_\_\_\_



## GLOBAL SOLUTIONS, LOCAL SERVICE

Since its founding in 1884, A.W. Chesterton Company has successfully met the critical needs of its diverse customer base. Today, as always, customers count on Chesterton solutions to increase equipment reliability, optimize energy consumption, and provide local technical support and service wherever they are in the world.

Chesterton's global capabilities include:

- Servicing plants in over 100 countries
- Global manufacturing operations
- More than 500 Service Centers and Sales Offices worldwide
- Over 1200 trained local Service Specialists and Technicians

Visit our website at  
[www.chesterton.com](http://www.chesterton.com)



Chesterton ISO certificates available on [www.chesterton.com/corporate/iso](http://www.chesterton.com/corporate/iso)

Technical data reflects results of laboratory tests and is intended to indicate general characteristics only.  
A.W. CHESTERTON COMPANY DISCLAIMS ALL WARRANTIES EXPRESSED, OR IMPLIED, INCLUDING WARRANTIES OF MERCHANTABILITY AND FITNESS FOR A PARTICULAR PURPOSE OR USE. LIABILITY, IF ANY, IS LIMITED TO PRODUCT REPLACEMENT ONLY.  
ANY IMAGES CONTAINED HEREIN ARE FOR GENERAL ILLUSTRATIVE OR AESTHETIC PURPOSES ONLY AND ARE NOT INTENDED TO CONVEY ANY INSTRUCTIONAL, SAFETY, HANDLING OR USAGE INFORMATION OR ADVICE RESPECTING ANY PRODUCT OR EQUIPMENT. PLEASE REFER TO RELEVANT MATERIAL SAFETY DATA SHEETS, PRODUCT DATA SHEETS AND/OR PRODUCT LABELS FOR SAFE USE, STORAGE, HANDLING AND DISPOSAL OF PRODUCTS OR CONSULT WITH YOUR LOCAL CHESTERTON REPRESENTATIVE.



DISTRIBUTED BY:



Sede legale: Via Panoramica 191 - 23010 Berbenno di Valtellina (SO)  
Sede operativa: Via Europa angolo G. Marconi sn - 23010 Berbenno di Valtellina (SO)  
C.F. / P. IVA: 00877330142  
Tel. 0342 49 27 14  
Mail: [info@mkr.it](mailto:info@mkr.it) - Pec: [mkr@pec.legal.it](mailto:mkr@pec.legal.it)

860 Salem Street  
Groveland, MA 01834 USA  
Telephone: 781-438-7000  
Fax: 978-469-6528  
[www.chesterton.com](http://www.chesterton.com)

© A.W. Chesterton Company, 2009. All rights reserved.  
® Registered trademark owned and licensed by  
A.W. Chesterton Company in USA and other countries.

FORM NO. EN22181

30KCEP'S DATA SHEET - ENGLISH

PRINTED IN USA 9/11