

# 491 DINS/491 DINL

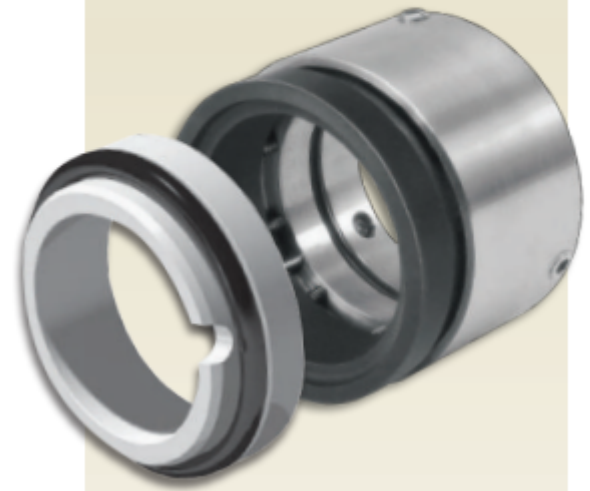
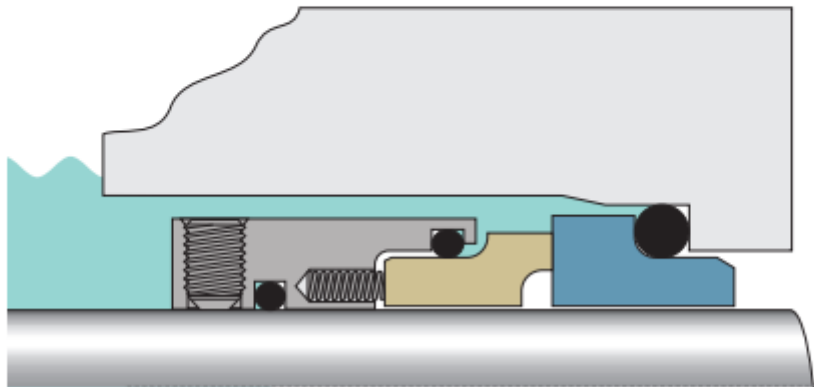
## Component Seal

### Easy to Install Rotary Component Seal for General Service

The 491 DIN is available in two versions, the 491 DINS with Short non-pinned stationary and the 491 DINL with Long pinned stationary to prevent stationary rotation.

The 491 is designed to minimize damage or fretting to the equipment shaft/sleeve as the dynamic O-Ring is positioned on a replaceable component surface. The balanced monolithic design provides a performance upgrade to standard component seals.

The availability of Spare Parts Kits ensures quick and easy rebuild in the field.



#### Reliable Upgrade from Original Equipment Seals

- Monolithic seal faces
- Balanced
- Non-clog isolated springs

#### Designed not to Fret Shaft or Sleeves

- Dynamic O-Ring is positioned on a replaceable component surface

#### Short Axial Length

- Fits EN12756 L1K dimension (former DIN24960)

### SPECIFICATIONS

#### Operating Parameters

Sizes	16 mm – 110 mm (0.629" – 4.375")
Pressure	711 mm Vacuum – 10 barg (28" Hg – 150 psig)
Temperature	-55°C – 300°C (-67°F – 570°F) Temperature limits by elastomer selection
Speed	20 m/s (4000 ftp)
Applicable Standards	ATEX <sup>1</sup> , EN12756, ISO30695, WRAS <sup>2</sup> , KTW <sup>2</sup> , ACS <sup>2</sup>

<sup>1</sup> Must use pinned stationary

<sup>2</sup> Food & Water Approvals with SSC/SSC/EP material combination only

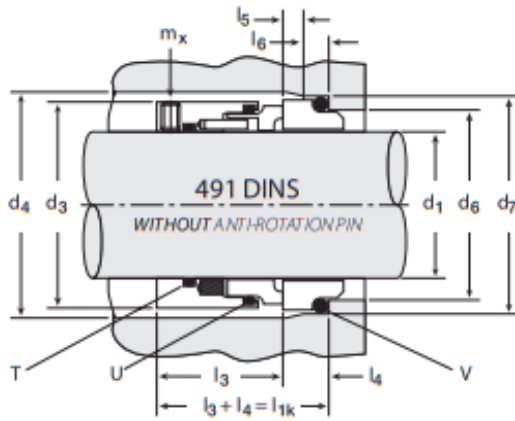
<sup>3</sup> Standard materials

#### Materials of Construction

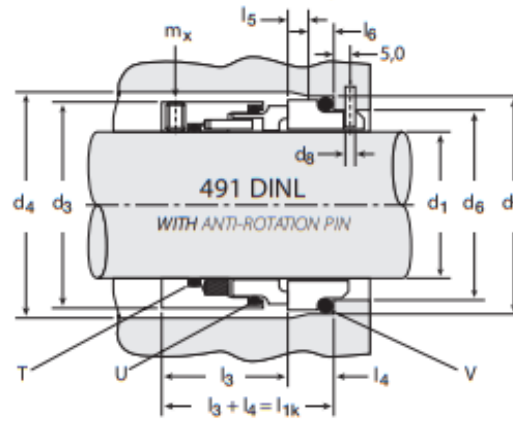
Rotary Face	Carbon <sup>3</sup> , (CB <sup>3</sup> ), Sintered Silicon Carbide <sup>3</sup> (SSC <sup>3</sup> )
Stationary Face	Sintered Silicon Carbide <sup>3</sup> (SSC <sup>3</sup> )
Elastomers	Fluorocarbon <sup>3</sup> (FKM <sup>3</sup> ), Ethylene-Propylene <sup>3</sup> (EPDM <sup>3</sup> ), Tetrafluoroethylene-Propylene (FEPM) Perfluoro-Elastomer (FFKM)
Rotary Holder	316 Stainless Steel / EN 1.4401
Springs	Alloy C-276 / EN 2.4819

## Dimensional Data

### 491 DINS without anti-rotation pin



### 491 DINL with anti-rotation pin



#### KEY

- d<sub>1</sub> – Shaft Diameter
- d<sub>3</sub> – Seal Outside Diameter
- d<sub>4</sub> – Seal Chamber Diameter
- d<sub>6</sub> – Bore Diameter
- d<sub>7</sub> – Static Sealing Diameter
- l<sub>1k</sub> – Installation Length
- l<sub>3</sub> – Rotary Operating Length
- l<sub>4</sub> – Axial Static Length
- l<sub>5</sub> – Chamfer Length
- l<sub>6</sub> – Static Sealing Surface Length
- d<sub>a</sub> – Anti-rotation Pin
- m<sub>x</sub> – Set Screw Size
- T – Static Shaft O-Ring
- U – Dynamic O-Ring
- V – Static Stationary O-Ring

d <sub>1</sub>	d <sub>3</sub>	d <sub>4</sub>	d <sub>6</sub>	d <sub>7</sub>	l <sub>1k</sub>	l <sub>3</sub>	l <sub>4</sub>	l <sub>5</sub>	l <sub>6</sub>	d <sub>a</sub>	m <sub>x</sub>	T	U	V
16 mm	28,9	31,0	23,0	27,0	35,0	30,0	5,0	2,0	4,0	3,0	M4	-016	-022	21,89 x 2,62 (-118)
18 mm	32,3	34,0	27,0	33,0	37,5	30,0	7,5	2,0	5,0	3,0	M4	-017	-023	26,57 x 3,53 (-215)
20 mm	34,3	36,0	29,0	35,0	37,5	30,0	7,5	2,0	5,0	3,0	M4	-018	-024	28,17 x 3,53 (-216)
22 mm	36,3	38,0	31,0	37,0	37,5	30,0	7,5	2,0	5,0	3,0	M4	-020	-025	29,74 x 3,53 (-217)
24 mm	38,4	40,0	33,0	39,0	40,0	30,0	10,0	2,0	5,0	3,0	M4	-021	-027	32,92 x 3,35 (-219)
25 mm	39,3	41,0	34,0	40,0	40,0	30,0	10,0	2,0	5,0	3,0	M4	-022	-027	32,92 x 3,53 (-219)
28 mm	42,3	44,0	37,0	43,0	42,5	35,0	7,5	2,0	5,0	3,0	M5	-122	-127	36,09 x 3,53 (-221)
30 mm	44,3	46,0	39,0	45,0	42,5	35,0	7,5	2,0	5,0	3,0	M5	-123	-128	37,69 x 3,53 (-222)
32 mm	46,4	48,0	42,0	48,0	42,5	35,0	7,5	2,0	5,0	3,0	M5	-124	-130	40,87 x 3,53 (-223)
33 mm	48,0	49,0	42,0	48,0	42,5	35,0	7,5	2,0	5,0	3,0	M5	-125	-131	40,87 x 3,53 (-223)
35 mm	49,5	51,0	44,0	50,0	42,5	35,0	7,5	2,0	5,0	3,0	M5	-126	-132	44,04 x 3,53 (-224)
38 mm	54,3	58,0	49,0	56,0	45,0	35,0	10,0	2,0	6,0	4,0	M5	-128	-134	48,00 x 4,00
40 mm	56,1	60,0	51,0	58,0	45,0	35,0	10,0	2,0	6,0	4,0	M5	-129	-135	50,00 x 4,00
43 mm	59,1	63,0	54,0	61,0	45,0	35,0	10,0	2,0	6,0	4,0	M5	-131	-137	53,00 x 4,00
45 mm	61,1	65,0	56,0	63,0	45,0	35,0	10,0	2,0	6,0	4,0	M5	-133	-139	55,00 x 4,00
48 mm	64,2	68,0	59,0	66,0	45,0	35,0	10,0	2,0	6,0	4,0	M5	-134	-141	58,00 x 4,00
50 mm	66,1	70,0	62,0	70,0	47,5	35,0	12,5	2,5	6,0	4,0	M5	-136	-142	61,00 x 4,50
53 mm	69,1	73,0	65,0	73,0	47,5	35,0	12,5	2,5	6,0	4,0	M5	-137	-144	65,00 x 4,50
55 mm	71,1	75,0	67,0	75,0	47,5	35,0	12,5	2,5	6,0	4,0	M5	-139	-145	65,00 x 4,50
60 mm	76,1	85,0	72,0	80,0	52,5	35,0	17,5	2,5	6,0	4,0	M5	-142	-148	71,00 x 4,50
65 mm	81,1	90,0	77,0	85,0	52,5	35,0	17,5	2,5	6,0	4,0	M5	-145	-151	76,00 x 4,50
68 mm	86,1	93,0	81,0	90,0	52,5	35,0	17,5	2,5	7,0	4,0	M5	-147	-152	78,74 x 5,33 (-338)
70 mm	86,1	95,0	83,0	92,0	60,0	35,0	25,0	2,5	7,0	4,0	M5	-148	-152	81,92 x 5,33 (-339)
75 mm	98,6	104,0	88,0	97,0	60,0	48,0	12,0	2,5	7,0	4,0	M6	-234	-238	85,09 x 5,33 (-340)
80 mm	104,2	109,0	95,0	105,0	60,0	48,0	12,0	3,0	7,0	4,0	M6	-236	-240	94,20 x 5,70
85 mm	108,1	114,0	100,0	110,0	60,0	48,0	12,0	3,0	7,0	4,0	M6	-237	-241	99,20 x 5,70
90 mm	114,0	119,0	105,0	115,0	65,0	48,0	17,0	3,0	7,0	4,0	M6	-239	-243	104,20 x 5,70
95 mm	117,5	124,0	110,0	120,0	65,0	48,0	17,0	3,0	7,0	4,0	M6	-240	-244	109,20 x 5,70
100 mm	123,8	129,0	115,0	125,0	65,0	48,0	17,0	3,0	7,0	4,0	M6	-242	-246	114,20 x 5,70
110 mm	133,5	139,0	125,0	135,0	67,0	48,0	19,0	3,0	7,0	4,0	M6	-246	-249	122,00 x 6,00

**QUICK ORDER REFERENCE EXAMPLE** - For quick and easy ordering please have the following information ready for your service representative.

MODEL	SIZE	FACES	ELASTOMERS	METALS
491 DINS	SHAFT DIAMETER	CB / SSC	FKM	316 SS

Chesterton ISO certificates available on  
[www.chesterton.com/corporate/iso](http://www.chesterton.com/corporate/iso)

Technical data reflects results of laboratory tests and is intended to indicate general characteristics only. A.W. Chesterton Company disclaims all warranties, express or implied, including warranties of merchantability and fitness for a particular purpose. Liability, if any, is limited to product replacement only. Any images contained herein are for general illustrative or aesthetic purposes only and are not intended to convey any instructional, safety handling or usage information or advice respecting any product or equipment. Please refer to relevant Safety Data Sheets, Product Data Sheets, and/or Product Labels for safe use, storage, handling, and disposal of products, or consult with your local Chesterton sales representative.

© 2018 A.W. Chesterton Company.  
 ® Registered trademark owned by A.W. Chesterton Company in USA and other countries, unless otherwise noted.

Distributed by:



Sede legale: Via Panoramica 191 - 23010 Berbenno di Valtellina (SO)  
 Sede operativa: Via Europa angolo G. Marconi sn - 23010 Berbenno di Valtellina (SO)  
 C.F. / P. IVA: 00877330142  
 Tel. 0342-492714  
 Mail: [info@maker.it](mailto:info@maker.it) - Pec: [mkr@peclegal.it](mailto:mkr@peclegal.it)